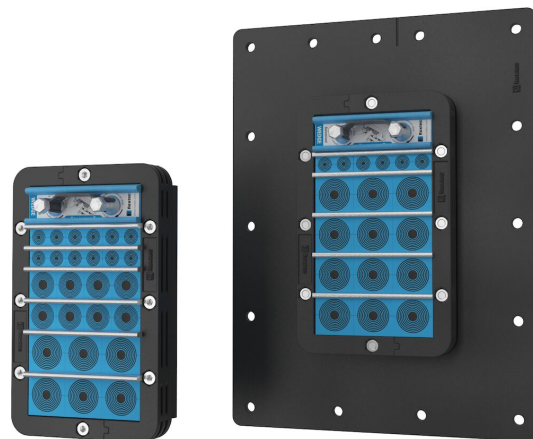




# Roxtec C KFO

Passaggio cavi di peso ridotto per armadi

Roxtec C KFO è una soluzione di sigillatura cavi per vari tipi di armadi, dove è importante mantenere il peso al minimo. Il telaio è realizzato in materiale composito (PA) ed è disponibile con un'unica apertura e, con o senza flangia.



- Previene l'ingresso di roditori
- Leggero
- Perfetto per il retrofit
- Facilità di manutenzione e controllo

## Caratteristiche



IP/UL NEMA

## Struttura dell'installazione



Armadi e quadri

## Ratings e certificati

### Tenuta

- IP 55

## Dimensioni telaio

mm/kg

Le varianti di telaio seguenti rappresentano una selezione limitata. Per la gamma completa di telai e configurazioni, visita [roxtec.com](https://www.roxtec.com).

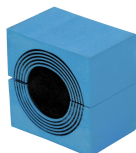
| Titolo                | Aperture del telaio | Spazio di riempimento | Dimensioni esterne WxHxD | Dimensioni apertura w x h | Peso | Art. Nr.      |
|-----------------------|---------------------|-----------------------|--------------------------|---------------------------|------|---------------|
| C KFO 6x1             | 1                   | 120 x 180             | 159 x 260 x 30           | 123(-2) x 223             | 0.6  | CKF0000060059 |
| C KFO 6x1 WITH FLANGE | 1                   | 120 x 180             | 319 x 420 x 30           | 170(+5/-5) x 270(+5/-5)   | 1.4  | CKF1000060059 |
| C KFO COUNTER FRAME   |                     |                       |                          |                           | 0.39 | KFC0000100011 |

## Dati relativi ai componenti

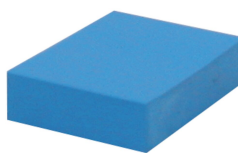
### Componenti per la sigillatura



C Wedge e Wedge kit



Modulo CM con Multidiameter™



Blocco di riempimento CM



Piastra di ancoraggio C Stayplate



Lubrificante

Per informazioni dettagliate, visita la pagina [roxtec.com](https://www.roxtec.com).



The product information provided by Roxtec does not release the purchaser of the Roxtec system, or part thereof, from the obligation to independently determine the suitability of the products for the intended process, installation and/or use.

Roxtec gives no guarantee for the Roxtec system or any part thereof and assumes no liability for any loss or damage whatsoever, whether direct, indirect, consequential, loss of profit or otherwise, occurred or caused by the Roxtec systems or installations containing components not manufactured by an authorized manufacturer and/or occurred or caused by the use of the Roxtec system in a manner or for an application other than for which the Roxtec system was designed or intended.

Roxtec expressly excludes any implied warranties of merchantability and fitness for a particular purpose and all other express or implied representations and warranties provided by statute or common law. User determines suitability of the Roxtec system for intended use and assumes all risk and liability in connection therewith. In no event shall Roxtec be liable for indirect, consequential, punitive, special, exemplary or incidental damages or losses.

The Roxtec products are offered and sold in accordance with the conditions of the Roxtec General Terms of Sales. The latest version of the Roxtec General Terms of Sales can be downloaded from <https://www.roxtec.com/en/about-us/about-roxtec/general-terms-of-sales/>

We reserve the right to make changes to the product and technical information without further notice. Any errors in print or entry are no claims for indemnity. The content of this publication is the property of Roxtec International AB and is protected by copyright.

This document was generated on: 2024-04-15